

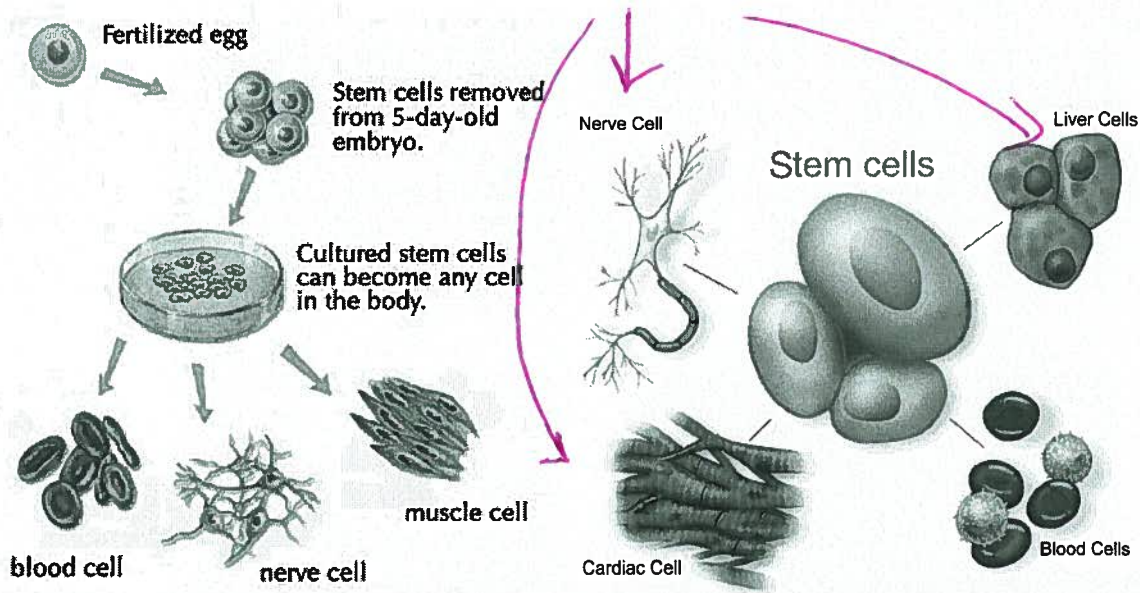
Guided Notes- Stem Cells & Cancer

What are stem cells? *Cells that are not specialized.
(no job/function)*

TWO Types of Stem Cells

- Embryonic Stem Cells (from embryos)*
- Adult Stem Cells (found in bone marrow)*

Stem cells can become any type of *SPECIALIZED* cell under the right conditions.



What is cancer? *Uncontrolled cell division
caused by DNA changes/mutations.*

Causes of cancer are called *Carcinogens*.

Examples *UV, Smoking,
Some foods, radiation
etc.*

Characteristics of cancerous cells.

- Less time in Interphase*
- No job*
- Takes nutrients from healthy cells*
- Divides rapidly*

Normal	Cancer	
		Large, variably shaped nuclei
		Many dividing cells; Disorganized arrangement
		Variation in size and shape
		Loss of normal features