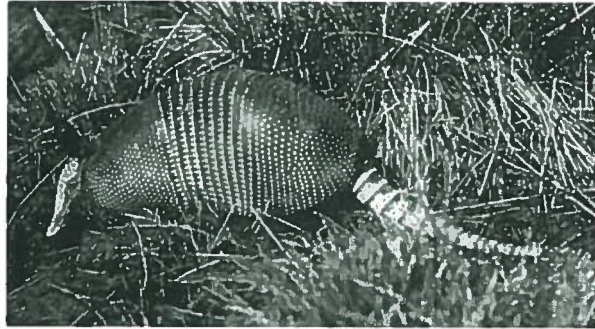
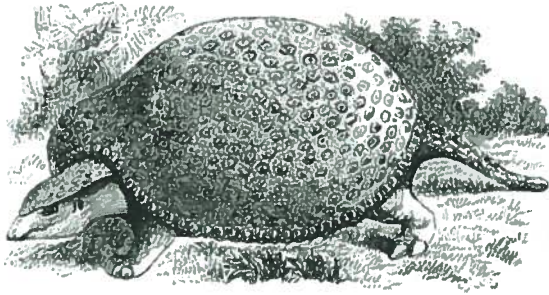


## Unit 10 Guided Notes: Evidence of Evolution

1. Fossil Records show that ancient species share similarities with species that now live on Earth.

Examples

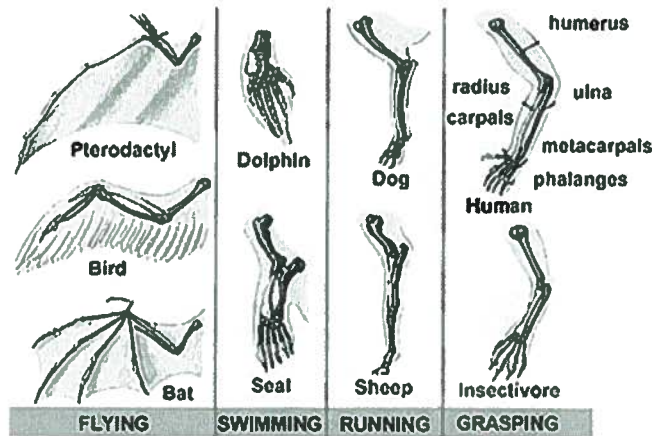


## 2. Comparative Anatomy

Anatomically similar structures inherited from a common ancestor are called

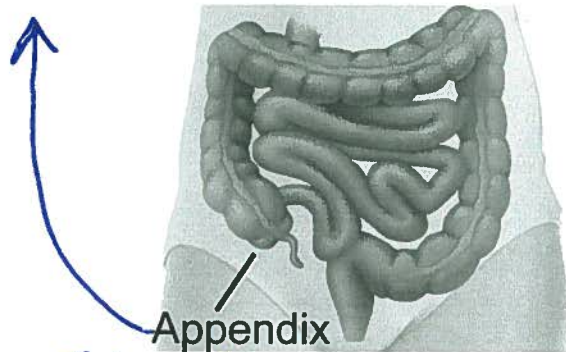
homologous structures

"Same"  
Structure  
(built the  
Same)



Vestigial Structures

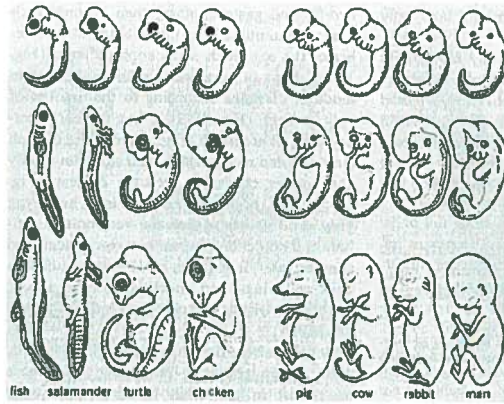
ancestors. (Examples: appendix, tailbone, etc) have no current function but may have in



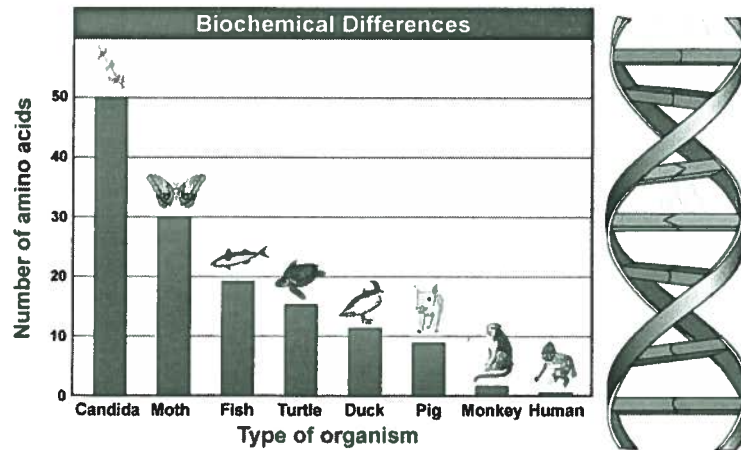
Analogous Structures

features that are NOT built the same but have a similar function, NO common ancestry (Example: bird wing and butterfly wing. They are built DIFFERENT even though they do the same function/job)

3. Embryology Embryos developing in a similar way may show common ancestry.

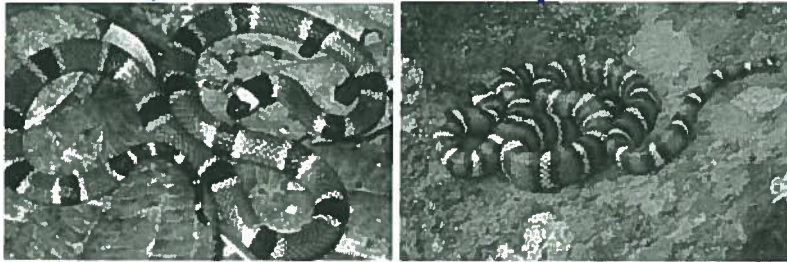


4. Biochemistry suggests that species with more DNA in common may have common ancestry.



5. **Adaptations** - genetic traits that help organisms survive.

- Fitness best traits will be successful.
- Camouflage blend into environment to avoid predators
- mimicry other organisms look like a more harmful organism



Antimicrobial resistance organism that have built up a resistance to diseases

5. Geographic Distribution of plants and animals suggested that organisms evolved according to Darwin. Evolution is linked to climate and geography.