

Name: _____

CLADOGRAM ANALYSIS

What is a **cladogram**? It is a **diagram** that depicts **evolutionary relationships** among groups. It is based on **PHYLOGENY**, which is the study of evolutionary relationships. Sometimes a cladogram is called a phylogenetic tree (though technically, there are minor differences between the two).

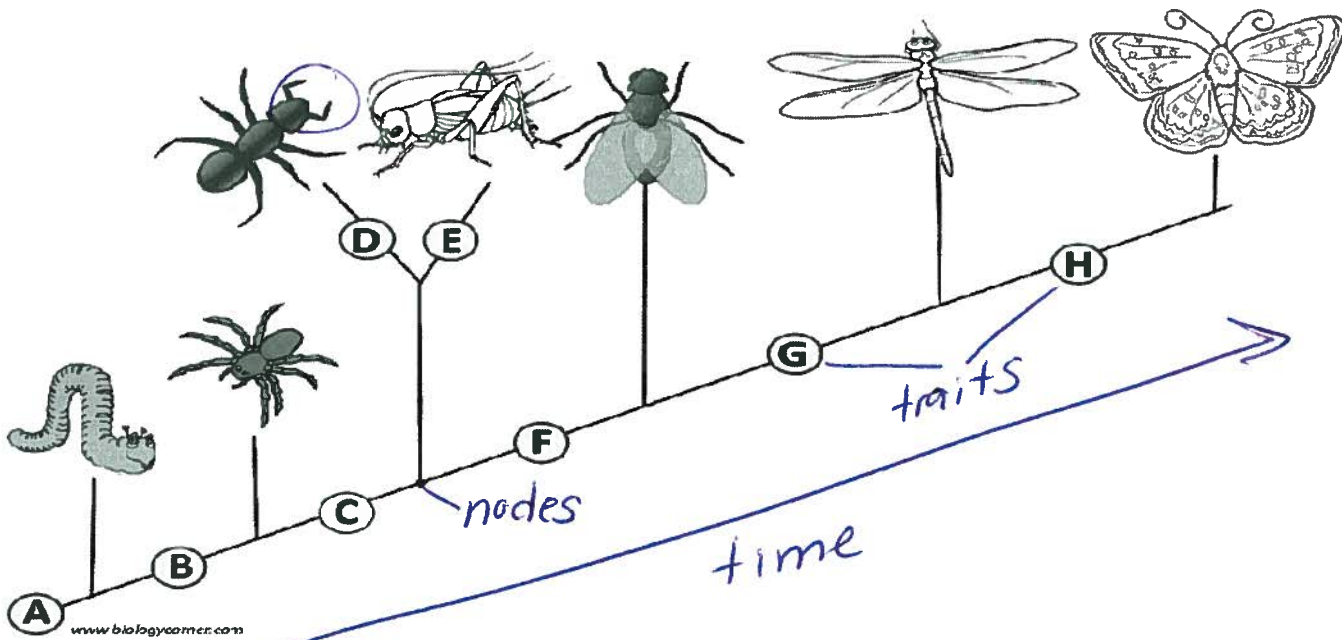
In the past, biologists would group organisms based solely on their physical appearance. Today, with the advances in **genetics and biochemistry**, biologists can look more closely at individuals to discover their pattern of evolution, and group them accordingly - this strategy is called **EVOLUTIONARY CLASSIFICATION**

CLADISTICS is form of analysis that looks at features of organisms that are considered "innovations", or newer features that serve some kind of purpose. (Think about what the word "innovation" means in regular language.) These characteristics appear in later organisms but not earlier ones and are called **DERIVED CHARACTERS**.

PART I - Analyze the Cladogram

(traits)

Examine the sample cladogram, each letter on the diagram points to a derived character, or something different (or newer) than what was seen in previous groups. Match the letter to its character. *Note: this cladogram was created for simplicity and understanding, it does not represent the established phylogeny for insects and their relatives.*



1. F Wings
2. C 6 Legs
3. A Segmented Body
4. G Double set of wings
5. E Jumping Legs
6. D Crushing mouthparts
7. B Legs
8. H Curly Antennae

PART II - Create Your Own Cladogram

To make a cladogram, you must first look at the animals you are studying and establish characteristics that they share and ones that are unique to each group. For the animals on the table, indicate whether the characteristic is present or not. Based on that chart, create a cladogram like the one pictured above.

Fur

	Cells	Backbone	Legs	Hair	Opposable Thumbs
Slug	X				
Catfish	X	X			
Frog	X	X	X		
Tiger	X	X	X	X	
Human	X	X	X	X	X

DRAWING OF YOUR CLADOGRAM

